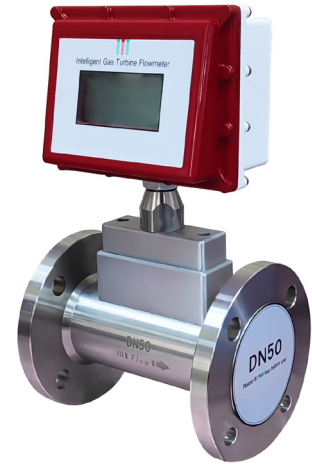


FEATURES

- High accuracy
- Sensitive response, good repeatability, short-term repeatability can reach 0.05%~0.2%. It is the preferred flow meter in trade settlement
- Can detect the temperature, pressure and flow of the measured gas. High-reliability gas precision measuring instrument capable of automatic flow compensation
- It can be equipped with oil injection pump to protect the impeller and prolong the service life of the flowmeter

APPLICATIONS

- Mostly used for metering control of natural gas
- It can also be used for biogas, liquefied petroleum gas, coal gas, nitrogen, hydrogen and other gases
- It is widely used in gas metering and gas pressure regulating stations, transmission and distribution pipeline networks, and urban natural gas metering in various industries such as petroleum, chemical industry, electric power, and industrial boilers



TECHNICAL SPECIFICATION

Accuracy	: ±1.5% of reading
Nominal diameter	: DN25-200mm
Power supply	: 24VDC
Material	: SS304, SS316
Medium temperature	: -20...+80°C
Rated pressure	: 1.6Mpa
Connection type	: Thread connection (DN25-50mm) Flange type (DN10-200mm)
Flange standard	: GB, ANSI, DIN, JIS
Protection level	: IP65
Output communication	: Pulse, 4-20mA, RS485 MODBUS ,HART
Oil injection pump	: With/without
Explosion proof	: Ex ia IIC T6 Ga (Optional)

FLOW RANGE SHEET

Flow Range (m³/h)	
DN25	4-40
DN40	10-100
DN50	16-160
DN65	25-250
DN80	40-400
DN100	65-650
DN125	100-1000
DN150	160-1600
DN200	250-2500

ORDERING CODES

1. NOMINAL DIAMETER (mm)

XXX	Three digits, refer to Nominal Diameter Coding Table	XXX
-----	--	-----

2. NOMINAL PRESSURE

1	0.6MPa	1
2	1.0MPa	
3	1.6MPa	
4	2.5MPa	
5	4.0MPa	
6	Other	

3. CONNECTION

1	Flange	1
2	Clamp	
3	Hygienic	
4	Threaded	

4. METER TYPE

N	24V power supply, pulse output	N
A	24V power supply, 4-20mA output	
B	24V power supply, HART output	
C	24V power supply, 4-20mA output + On-site display	
C1	24V power supply, RS485 output + On-site display	
C2	24V power supply, HART output + On-site display	

5. ACCURACY

10	1%	10
15	1.5%	

6. MATERIAL

C	Cast Aluminium	
S	SS304	S
L	SS316	

7. EXPLOSION PROOF

A	Non-explosion proof	A
B	Explosion proof (Exd IIBT6)	

8. MACHINE CORE MATERIAL

N	Anti-corrosion ABS	N
H	Aluminium alloy	

Ordering Example : FL98-XXX-1-1-N-10-S-A-N

NOMINAL DIAMETER CODING TABLE

NOMINAL DIAMETER	CODE
20	020
25	025
32	032
40	040
50	050
65	065
80	080
100	110
125	112
150	115
200	120