

**FEATURES**

- Compact design
- Stainless steel case
- Zero adjustment on dial
- Low pressure application (<0.6 mbar)

**APPLICATIONS**

- Food & Beverages
- Clean- air applications

**Capsule****STANDARD PARAMETERS**

Accuracy	: CL 1.6
Ambient temperature	: -40...+65°C
Service temperature	: 100°C max
Pressure limits	: Steady pressure up to %75 of FS value, No over-pressure
Standard	: EN837-3

**MATERIAL OF CONSTRUCTION**

Sensing element	: Welded capsule
Case & Ring material	: AISI 304 SS (Bayonet type)
Capsule	: Cu- alloy
Socket	: Cu- alloy
Movement mechanism	: Cu- alloy
Dial	: Aluminum, black graduation on white background with external zero adjustment on dial
Pointer	: Fixed, aluminum, black powder coated
Gaskets, Blow off disc & filling plug	: Neoprene
Window	: Glass

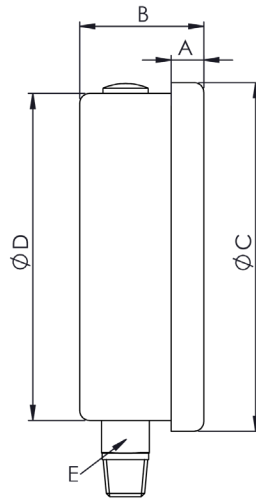
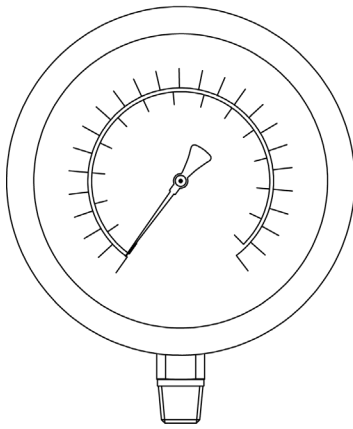
**STANDARD SPECIFICATIONS**

Dial size	: DN63 / DN100 / DN160
Range	: -600...25...600 mbar
Mounting pattern	: Direct, Bottom connection
Process connection	: ½" NPT (M)
Ingress protection	: IP 54
Execution	: Dry

**TEMPERATURE EFFECT**

When temperature of the measuring system deviates from reference temperature (+20°C) max error  $\pm 0.4\%$  / 10K of true scale value. (According to EN837)

Type A



DN	A	B	C	D	E	Weight
100	17	50	100	98	SW24	~588 g
160	15	53	160	150	SW22	-

### ORDERING CODES

#### 1. DIAL SIZE

03	63 mm / 2½"	03
05	100 mm / 4"	
07	160 mm / 6"	

#### 2. RANGE

XXX	Refer "Range Table"	XXX
-----	---------------------	-----

#### 3. MOUNTING PATTERN

A	Direct, Bottom connection	A
B	Panel/bracket mounting, Lower back connection	
J	Centre, Back connection	

#### 4. PROCESS CONNECTION

12B	¼" BSP (M)	
12N	¼" NPT (M)	12N
13B	3/8" BSP (M)	
14B	½" BSP (M)	
14M	M20 X 1.5 mm (M)	
14N	½" NPT (M)	
Other thread size and standards available on request		

#### 5. INGRESS PROTECTION

EV	IP 54	EV
----	-------	----

#### 6. EXECUTION

EA	Dry	EA
----	-----	----

#### 7. OTHER OPTIONS

BA	Case & Ring in AISI 316 SS	BA
EO	Dampening screw	
G8	Painted steel case	
GC	Safety glass	
TA	Calibration certificate	
TC	Material test certificate	
TO	Use for Oxygen service	
XF	SS tag plate, AISI 304 SS	
XG	SS tag plate, AISI 316 SS	
XR	Custom designed dial	
XT	Dial tag marking	

**Ordering Example : PG9-08-03-XXX-A-12N-EV-EA-BA**

#### NOTES

- For other connections, please contact factory.
- DN63 available with ¼" connections. Other connections through adaptors.

#### STANDARD RANGES

RANGE	"mbar"	RANGE	"kg/cm <sup>2</sup> "	RANGE	"psi"	RANGE	"mmH <sub>2</sub> O"
0...10	F01	0...0.01	K61	0...0.15	S51	0...100	H01
0...16	F03	0...0.016	K62	0...0.25	S52	0...160	H02
0...25	F05	0...0.025	K63	0...0.36	S53	0...250	H03
0...45	F07	0...0.045	K64	0...0.65	S54	0...450	H04
0...60	F09	0...0.06	K65	0...1.0	S55	0...600	H05
0...100	F11	0...0.1	K66	0...1.5	S56	0...1000	H06
0...160	F13	0...0.16	K67	0...2.5	S57	0...1600	H07
0...250	F15	0...0.25	K68	0...3.6	S58	0...2500	H08
0...400	F17	0...0.4	K69	0...6.0	S59	0...4000	H09
0...600	F19	0...0.6	K01	0...10	S01	0...6000	H10

#### Vacuum and +/- Scale Ranges

RANGE	"mbar"	RANGE	"mbar"
-10...0	V01	-5...+5	V21
-16...0	V03	-8...+8	V23
-25...0	V05	-20...+20	V25
-40...0	V07	-30...+30	V27
-60...0	V09	-50...+50	V29
-100...0	V11	-80...+80	V31
-160...0	V13	-125...+125	V33
-250...0	V15	-200...+200	V35
-400...0	V17	-300...+300	V39
-600...0	V19	-	-

#### NOTES

1. Other scales & measurement units are available.
2. Equivalent scales available in kg/cm<sup>2</sup>, psi, kPa, MPa, bar/psi, kPa/bar, kPa/psi or any other special scales.
3. Primary scales shall be in "BLACK" and secondary scales shall be "RED".
4. Special scales, custom dial design, OEM/private logo printing is available, details contact our marketing team.