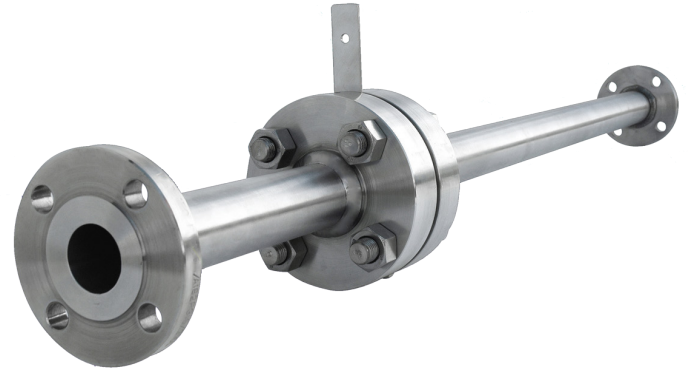


FEATURES

- Compact design
- Pipe sizes from 1/2" to 2"
- Design to ASME MFC-14M
- Suitable for liquid, gas and steam flow measurement



PRODUCT OVERVIEW

When the pipe size is below 50mm, a meter run is generally used instead of standard orifice flanges and plate.

A meter run is an assembly including an inlet flange, inlet pipe, orifice carrier, orifice plate, gaskets, outlet pipe and outlet flange as shown above. The standard used for sizing meter run is ASME MFC-14M.

DESIGN DETAILS

Line sizes: 1/2" - 2".

Designed based on ASME MFC-14M

End flange Rating: 150# - 2500#

End flange type: Weld neck, slip on, other on request.

Reducing measurement inaccuracies due to the integrated design.

Available in different materials.

Suitable for both liquids, gas and steam flow measurement.

MATERIALS

Standard material grades include 316 Stainless Steel and 304 Stainless. Please contact the sales office for other materials.

SCHEMATIC DIMENSIONAL DRAWING

