

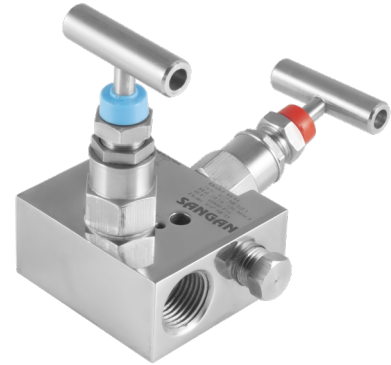
FEATURES

- 1 isolate & 1 vent valves

APPLICATIONS

- Isolation & venting of gauges, switches & transmitters
- High pressure line shut off
- Liquid & gas services

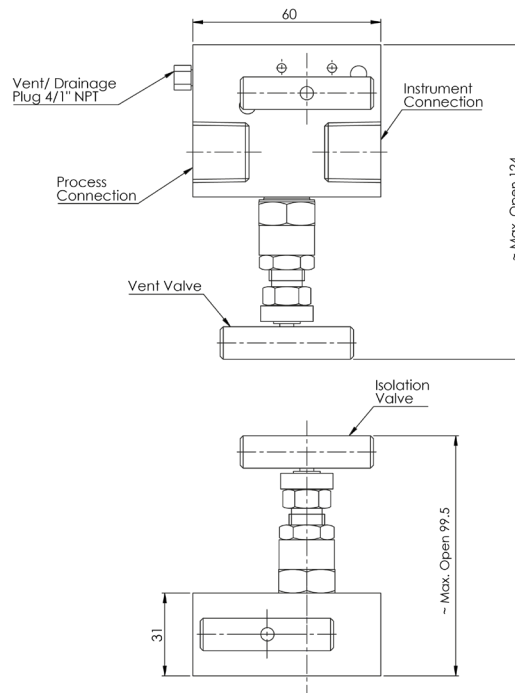
Remote mounting (Angled Forward)



STANDARD SPECIFICATIONS

Mounting	: Angled
Wetted parts	: AISI 316 SS
Instrument connection	: 1/2" NPT (F)
Stem packing	: PTFE
Process connection	: 1/2" NPT (M)
Stem	: Conical metal tip
Max. working pressure	: 413.7 bar (6000 psi) — > Option (OV) up to 15000 psi
Max. working temperature	: 240°C
"T" bar handle	: AISI 316 SS
Drain port	: 1/4" NPT (F), plugged
Weight	: ~805 g

DIMENSIONAL DRAWING



All dimensions are in mm.

ORDERING CODES

1. MOUNTING

RE	Remote	RE
----	--------	----

4. STEM PACKING

ME	PTFE	MA	Grafoil	ME
----	------	----	---------	----

2. WETTED PARTS

MB	Carbon Steel / ASTM A105	MF	AISI 316 SS	MF
MC	AISI 304 SS	MM	Monel	
MG	AISI 316L SS	MO	Hastelloy C-276	
MD	Super duplex			
MR	Inconel 625			

5. PROCESS CONNECTION

11N	1/8" NPT (M)	12N	1/4" NPT (M)	
13N	3/8" NPT (M)	14N	1/2" NPT (M)	14N
11B	1/8" BSP (M)	12B	1/4" BSP (M)	
13B	3/8" BSP (M)	14B	1/2" BSP (M)	
01N	1/8" NPT (F)	02N	1/4" NPT (F)	
03N	3/8" NPT (F)	04N	1/2" NPT (F)	
01B	1/8" BSP (F)	02B	1/4" BSP (F)	
03B	3/8" BSP (F)	04B	1/2" BSP (F)	

3. INSTRUMENT CONNECTION

11N	1/8" NPT (M)	12N	1/4" NPT (M)	
13N	3/8" NPT (M)	14N	1/2" NPT (M)	
11B	1/8" BSP (M)	12B	1/4" BSP (M)	
13B	3/8" BSP (M)	14B	1/2" BSP (M)	
01N	1/8" NPT (F)	02N	1/4" NPT (F)	
03N	3/8" NPT (F)	04N	1/2" NPT (F)	04N
01B	1/8" BSP (F)	02B	1/4" BSP (F)	
03B	3/8" BSP (F)	04B	1/2" BSP (F)	

6. OTHER OPTIONS

TN	NACE standards	
TO	Use for Oxygen service	
TH	Hydro test certificate	
TC	Material test certificate	
XD	Customized Marking	
XL	Marking by laser	XL
OV	Overpressure up to 15000 psi	

Ordering Example : M2A-RE-MF-04N-ME-14N-XL

STANDARD EXECUTION

PACKING MATERIAL	PRESSURE VS TEMPERATURE	
PTFE (High Pressure)	690 bar at 38°C	10.000 psi at 100 °F
	420 bar at 38 °C	3000 psi at 100 °F
PTFE	276 bar at 204 °C	4000 psi at 400 °F
	420 bar at 38 °C	6000 psi at 100 °F
Graphite	209 bar at 538 °C	3000 psi at 1000 °F

NOTE

Other connections are available, please contact factory for details.

02/02