

## FEATURES

- Extended neck design
- Laser welded diaphragm
- Optional exotic materials

## APPLICATIONS

- Separation systems
- Isolation applications
- Viscous & corrosive media
- High-pressure applications
- High vibration application
- Slurry applications

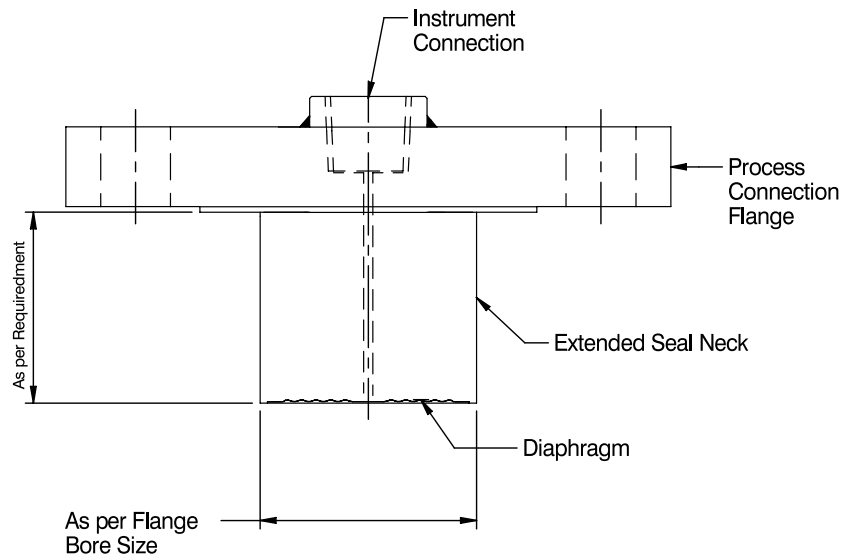
## Extended Neck Type



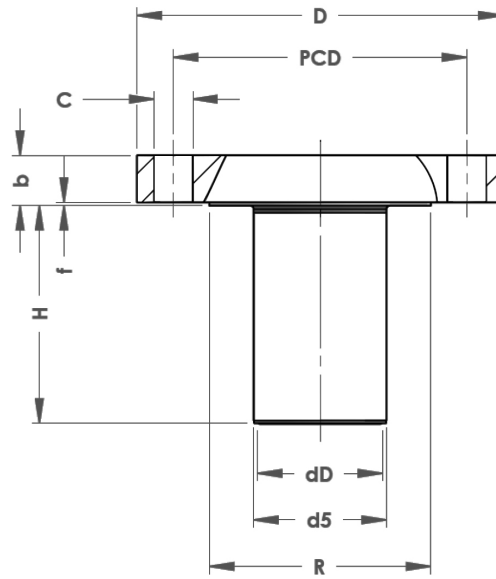
## STANDARD SPECIFICATIONS

Range type	: -1...0 bar to 0...250 bar
Chamber / Flange material	: AISI 316 SS
Diaphragm	: AISI 316 SS
Instrument connection	: ½" NPT (F)
Sealing fluid	: Silicon
Process connection	: As per ANSI B16.5
Flange facing type	: Raised face
Protection on wetted parts	: Optional
Neck extension	: 50...200 mm
Assembly	: Direct
Capillary	: Optional

## DIMENSIONAL DRAWING



All dimensions are in mm.



Size	Rating	D	b	PCD	C / pcs	dD	d5	R	F
1.5"	cl. 150	127.0	17.9	98.6	15.9 / 4x	32.0	38.0	73.0	1.5
	cl. 300	155.0	21.1	114.3	22.3 / 4x				
	cl. 400-600		29.3						
	cl. 900-1500	178.0	38.8	124.0	28.6 / 4x				6.4
	cl. 2500	203.0	51.5	146.0	31.8 / 4x				
2"	cl. 150	152.0	19.5	120.6	19.1 / 4x	44.0	48.0	92	1.5
	cl. 300	165.0	22.7	127.0	19.1 / 8x				
	cl. 400-600		32.4						
	cl. 900-1500	216.0	45.1	165.1	25.4 / 8x				6.4
	cl. 2500	235.0	57.9	171.4	28.6 / 8x				
3"	cl. 150	190.0	24.3	152.4	19.1 / 4x	72.0	76.0	127.0	1.5
	cl. 300	210.0	29.0	168.1	22.3 / 8x				
	cl. 400-600		38.8						
	cl. 900	241.0	45.1	190.5	25.4 / 8x				6.4
	cl. 1500	267.0	54.7	203.2	31.9 / 8x				
	cl. 2500	305.0	73.7	228.6	35.0 / 8x				
4"	cl. 150	229.0	24.3	190.5	19.1 / 8x	81.0	93.0	157.2	
	cl. 300	254.0	32.2	200.2	22.3 / 8x				
	cl. 400		42.0						25.5 / 8x
	cl. 600	273.0	45.1	215.9	6.4				
	cl. 900	292.0	51.5	235.0					31.8 / 8x
	cl. 1500	311.0	61.0	241.3					34.9 / 8x
	cl. 2500	356.0	83.2	273.0					41.3 / 8x

## ORDERING CODES

### 1. RANGE TYPE

Z42	-1...250 bar	Z42
-----	--------------	-----

### 2. CHAMBER / FLANGE MATERIAL

MF	AISI 316 SS	MF
MG	AISI 316L SS	
MM	Monel	
MO	Hastelloy C-276	

### 3. DIAPHRAGM MATERIAL

MG	AISI 316L SS	MG
MF	AISI 316 SS	
MM	Monel	
MO	Hastelloy C-276	
MW	Tantalum	
MV	Titanium	

### 4. INSTRUMENT CONNECTION

03B	3/8" BSP (F)	
04N	1/2" NPT (F)	04N
02B	1/4" BSP (F)	
04B	1/2" BSP (F)	
02N	1/4" NPT (F)	

### 5. SEALING FLUID

OA	Silicon	OA
OG	Glycerine	

### 6. PROCESS CONNECTION

XXX	Refer Flange Table for the codes	XXX
-----	----------------------------------	-----

### 7. FLANGE FACING

FF	Flat Face	
RJ	Ring-Type Joint	
RF	Raised Face	RF
TR	Tongue and Groove (T&G)	

### 8. PROTECTION ON WETTED PARTS

PA	PTFE coating on flange	PA
PC	PTFE coating on diaphragm	

### 9. NECK EXTENSION

XXX	50mm up to 200mm	100
-----	------------------	-----

### 10. ASSEMBLY

DR	Direct	DR
RE	Remote	

### 11. CAPILLARY

MC	AISI 304 SS	MC
MF	AISI 316 SS	

### 12. ARMOUR

MC	AISI 304 SS	MC
MF	AISI 316 SS	
MP	PVC (Ambient max. 60°C)	

### 13. REMOTE MOUNTING LENGTH

XXXX	1000 mm up to 4000 mm	4000
------	-----------------------	------

### 14. OTHER OPTIONS

TC	Material test certificate	TC
TN	NACE standards	

**Ordering Example : EXT-Z42-MF-MG-04N-OA-XXX-RF-PA-100-DR-MC-MC-4000-TC**

## NOTES

1. Other sealing liquids are available , contact factory for further details.
2. All metal diaphragms are laser welded to the Top Chamber.

## Flange Table

ANSI B 16.5								
Code	Size	Rating	Code	Size	Rating	Code	Size	Rating
A01	½"	150#	A02	½"	300#	A03	½"	600#
A04	½"	900#	A05	½"	1500#	A06	½"	2500#
A07	¾"	150#	A08	¾"	300#	A09	¾"	600#
A10	¾"	900#	A11	¾"	1500#	A12	¾"	2500#
A13	1"	150#	A14	1"	300#	A15	1"	600#
A16	1"	900#	A17	1"	1500#	A18	1"	2500#
A19	1¼"	150#	A20	1¼"	300#	A21	1¼"	600#
A22	1¼"	900#	A23	1¼"	1500#	A24	1¼"	2500#
A25	1½"	150#	A26	1½"	300#	A27	1½"	600#
A28	1½"	900#	A29	1½"	1500#	A30	1½"	2500#
A31	2"	150#	A32	2"	300#	A33	2"	600#
A34	2"	900#	A35	2"	1500#	A36	2"	2500#
A37	2½"	150#	A38	2½"	300#	A39	2½"	600#
A40	2½"	900#	A41	2½"	1500#	A42	2½"	2500#
A43	3"	150#	A44	3"	300#	A45	3"	600#
A46	3"	900#	A47	3"	1500#	A48	3"	2500#
A49	4"	150#	A50	4"	300#	A51	4"	600#
A52	4"	900#	A53	4"	1500#	A54	4"	2500#